

SPARE PARTS CATALOGUE

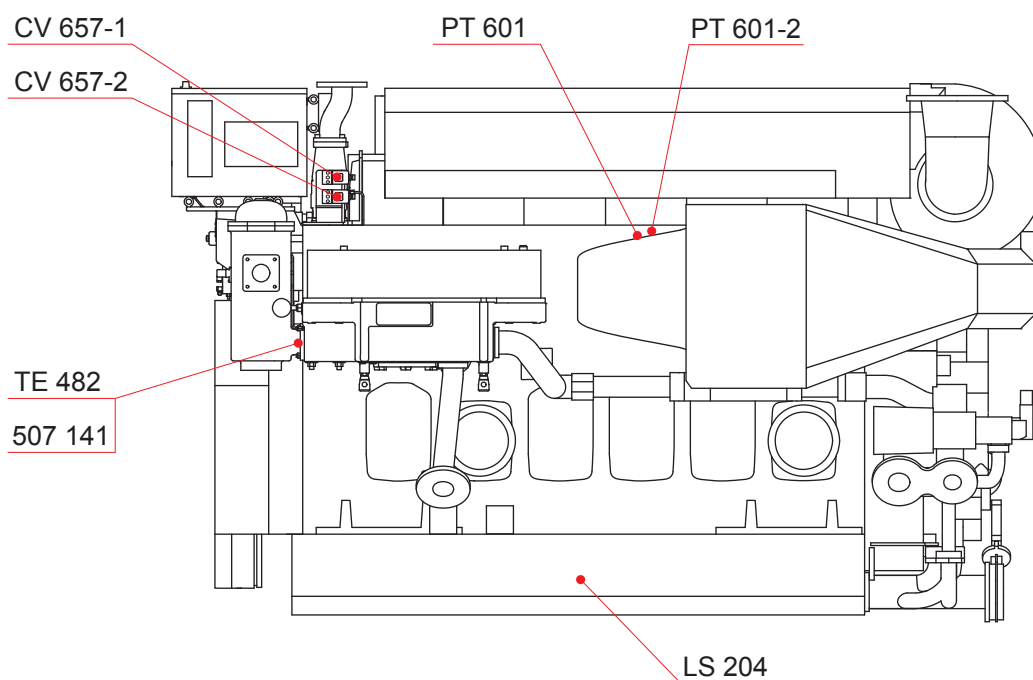
Document ID	DBAB591121 c
Installation	NORDIC YARDS 202
Engine type	W4L20
Engine number	PAAE205912
Project	NORDIC YARDS 202

This spare parts catalogue is intended for the personal use of engine operators and should always be at their disposal. The content of this manual shall neither be copied nor communicated to a third person.

Edition: B

Page: 6(8)

Updated: 11.10.2010

Sensor locations

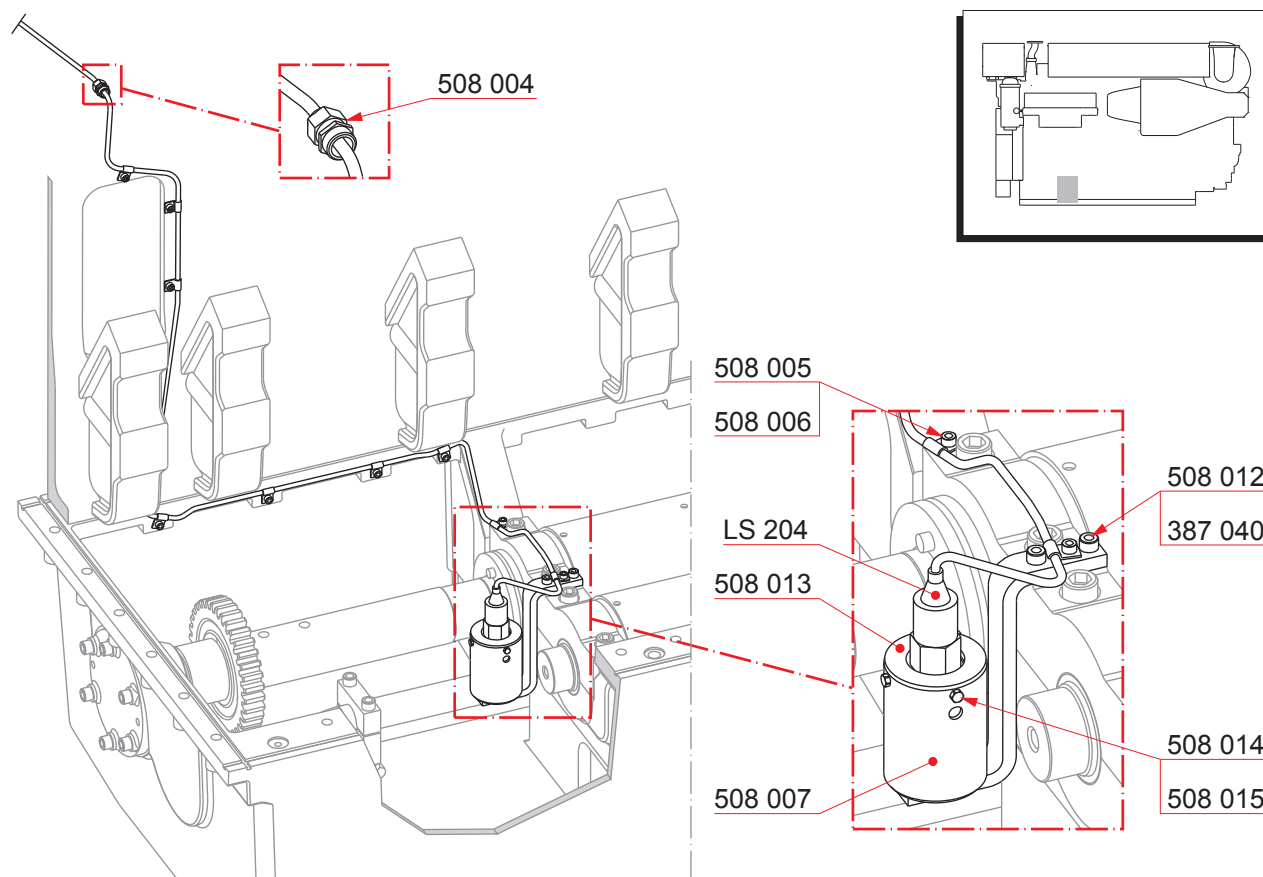
Part No.	Description	Qty [Pcs]	Wt. [Kg]
CV657-1	Solenoid valve (2)	1	-
CV657-2	Solenoid valve (2)	1	-
LS204	Level switch, lubricating oil level low	1	-
PT601	Pressure transducer, charge air pressure	1	-
PT601-2	Pressure transducer	1	-
TE482	Temp. sensor, LT- thermostatic control, LT-water	1	-
507 141	Protecting well (5)		-

NOTE! (2) If air wastegate is used.

NOTE! (5) Specify amount when ordering.

NOTE! When ordering spare parts, check codes and names in General Arrangement and Wiring Diagram drawings for the specific installation.

Lubricating oil level alarm switch



Part No.	Description	Qty [Pcs]	Wt. [Kg]
LS204	Level switch, lubricating oil level low (1)	1	0.6
508 004	Cable gland	1	-
508 005	Cable clamp	8	-
508 006	Screw	8	-
508 007	Tank for alarm device	1	-
508 012	Screw	2	-
508 013	Cover	1	0.2
508 014	Screw	3	-
508 015	Locking plate	3	-
387 040	Glue compound	1	-

NOTE! (1) Cable included.